

# MES INSTITUTE OF MANAGEMENT

VidyaVihar, 25/1,17<sup>th</sup> Main, II Block, Rajajinagar, Bangalore-560 010.

## ACTION TAKEN REPORT FOR THE YEAR 2020-21

Feedback from all the stakeholders- Faculty, Students, Alumni, are taken every year by HOI in coordination with IQAC which can be filled online regarding various aspects including curriculum. The analysis is reported and suitable timely actions are taken for the overall development of the institution and students. The summary of the action taken report for the academic year 2020-21 is as follows.

### FEEDBACK FROM FACULTY

#### QUESTIONS RATED BELOW AVERAGE (SUGGESTIONS)

#### ACTION TAKEN

Revision in the syllabus as per the current trend.

To match the current trend in the corporate sector, institution providing appropriate value-added courses to all the students to upgrade their knowledge equivalent to corporate level courses.

Application based curriculum in degree courses.

Involve all stakeholders while framing syllabus

Institution continuously keeping in touch with BOS for getting information regarding any changes in the curriculum

### FEEDBACK FROM STUDENTS

#### QUESTIONS RATED BELOW AVERAGE (SUGGESTIONS)

#### ACTION TAKEN

choice-Based Credit System- Due to covid-19 lock down, many critical situations were faced

Institution adopted online teaching mode to complete syllabus and revision classes for students, provided study materials to ease the situation

The syllabus of the course has the expected outcome of the course

Relevant value-added courses are initiated to improve the course outcome and to bridge the gap between academics and industry requirement.

Syllabus are relevant to the development of various skills necessary for Career advancement, Employment and Self Employment

Skill development activities, courses are initiated, placement cell activities are also initiated to provide students opportunities to attend interview for placement.

The curriculum has the potential in developing the habit of self-learning and skill development

Overall rating of the program and various facilities in the college

Many measures have been taken to improve the facility projectors, computer lab facility, commerce lab



## FEEDBACK FROM ALUMNI

| QUESTIONS RATED<br>BELOW AVERAGE<br>(SUGGESTIONS)           | ACTION TAKEN  |
|---|---|
| Extension Activities- Co-curricular<br>And Extra curricular | Due to lock down much, extra-curricular activities could not be conducted. Therefore, MESIOM has taken initiative to increase the cocurricular and extra-curricular activites for students for their overall development. |
| Learning Resources  | Institution has taken keen initiative to improve learning resources by installing projectors, lap top facility for ICT enabled teaching, increase in the book facility in the library                                     |
| Sports Facility in The College                              | Sports facility is improved and sports activity is encouraged in the form of annual sports meet, inter-collegiate sports events etc.,   |

*H. M. S.*  
**IQAC Coordinator**  
**MES Institute of Management**  
**Rajajinagar, Bangalore-560 010**

*Sharada S*  
Principal  
MES Institute of Management  
Rajajinagar, Bangalore-560 010



# MES INSTITUTE OF MANAGEMENT

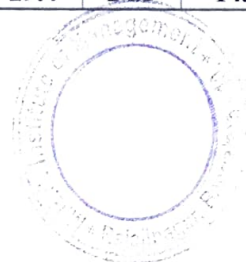
Vidya Vihar, 25/1,17<sup>th</sup> Main, II Block, Rajajinagar, Bangalore-560 010

## STUDENTS FEEDBACK ON CURRICULUM FOR THE ACADEMIC YEAR 2020-21

The students are the most important stakeholders of Higher Education system. To understand the requirements of the students and to provide a well-designed systematic academic knowledge focusing higher education and corporate requirements, the institution has collected feedback from students. A special five-point rating scale was adopted to get the opinion of the students on curriculum. The maximum score is 5 indicates-Excellent, 4 indicates-Very Good, 3 indicates-Good, 2 indicates-Average and 1 indicates -Poor. The institution has received total of 493(678) student's online feedback on the curriculum prescribed by the university and feedback on the value-added courses. The table given below are the questions that given in the questionnaire and the symbols are used to depict the same parameter for analysis in the table and graph.

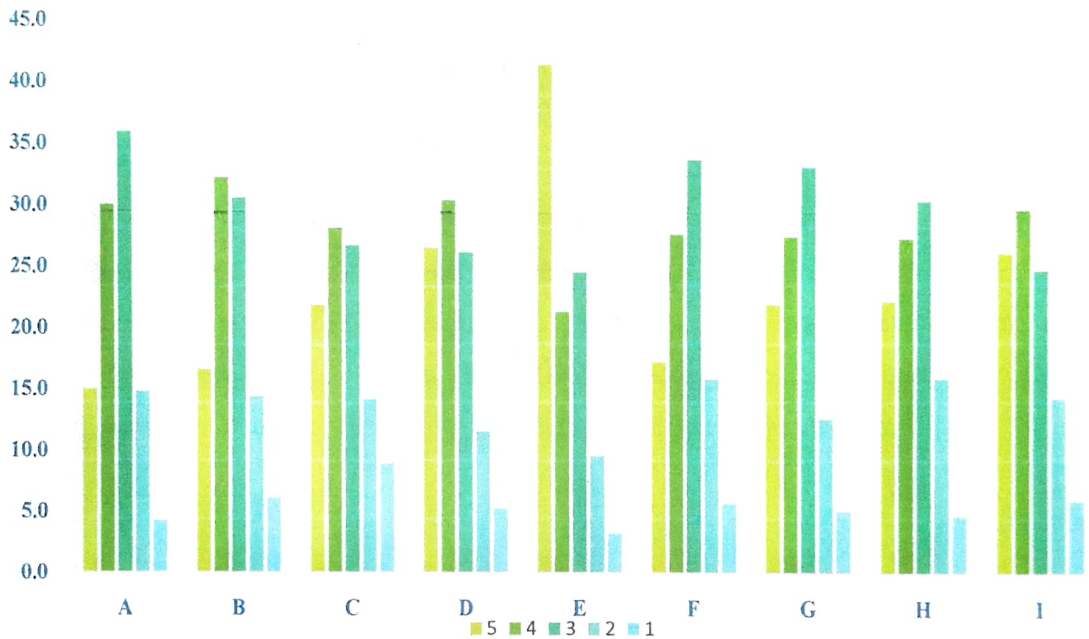
**TABLE SHOWING THE PERCENTAGE OF RESPONSES OF THE STUDENTS FOR THE ACADEMIC YEAR 2020-21**

| 2020-21   |   | 5    | 4    | 3    | 2    | 1   |
|---|---|------|------|------|------|-----|
| Value Added Programs  | A | 15.0 | 30.0 | 35.9 | 14.8 | 4.3 |
| expected outcome of the course                                      | B | 16.6 | 32.3 | 30.6 | 14.4 | 6.1 |
| choice-based credit system  | C | 21.9 | 28.2 | 26.8 | 14.2 | 8.9 |
| Overall rating of the program and various facilities in the college | D | 26.6 | 30.4 | 26.2 | 11.6 | 5.3 |
| Syllabus of each course covers recent trends and developments       | E | 41.4 | 21.3 | 24.5 | 9.5  | 3.2 |
| Course Content has enough scope for analytical development          | F | 17.2 | 27.6 | 33.7 | 15.8 | 5.7 |
| Objectivity of assessment and evaluation                            | G | 21.9 | 27.4 | 33.1 | 12.6 | 5.1 |
| Developing habit of self-learning and skill development             | H | 22.1 | 27.2 | 30.2 | 15.8 | 4.7 |
| Teaching methodologies adopted by faculties                         | I | 26.0 | 29.4 | 24.5 | 14.2 | 5.9 |



**GRAPH SHOWING THE PERCENTAGE OF RESPONSES OF THE STUDENTS FOR THE  
ACADEMIC YEAR 2020-21**

**STUDENTS FEEDBACK ON CURRICULUM-2020-21**



From the above Table and Graph enclosed, it is apparent, that the students have given more than 90%, their response positively, for the questions asked for finding out their views on the curriculum adopted by the institution, prescribed by the university. Some of the important highlights of the response of the students is regarding, Value Added Programs, Overall rating of the program and various facilities in the college

Syllabus of each course covers recent trends and developments, Teaching methodologies adopted by faculties and Developing habit of self-learning and skill development

It is really pleasing to see that none of the parameters have been given below 90% rating by the students and it's a sign of positive improvement of the strategies adopted by the institution focusing the development of the students. But still there are some more improvements need to be taken by the institution to drive the minor negativity identified in the average column of the analysis table.

*Shavade S*

Principal

MES Institute of Management  
Rajajinagar, Bangalore-560 010

*H. M. S.*

IQAC Coordinator

MES Institute of Management  
Rajajinagar, Bangalore-560 010

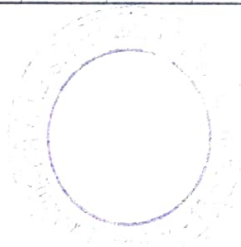
# MES INSTITUTE OF MANAGEMENT

VidyaVihar, 25/1,17<sup>th</sup> Main, II Block, Rajajinagar, Bangalore-560 010.

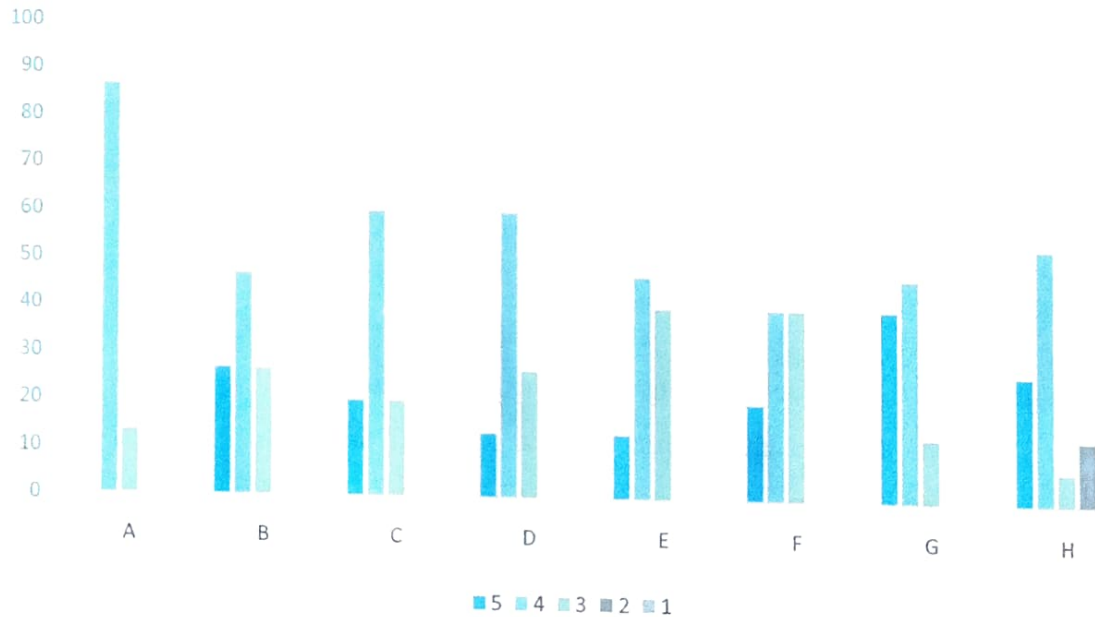
## FACULTY FEEDBACK REPORT ON CURRICULUM- 2020-21

MES Institute of Management is affiliated to the Bengaluru City University and follows the prescribed curriculum of the affiliated university. It always emphasises to make curriculum more effective to students, timely bridging the gap between academic and industry requirements as well as considering the students future requirements, it efforts to improve the curriculum as per requirements. As important stake holder of the institution and considering the intellectual knowledge of the highly qualified and experienced faculties, the institution collects feedback from all the faculty members regarding suggestions on improvement of the syllabus. These feedback on the curriculum and analysed and the same is reviewed by Head of the Institution and IQAC coordinator for introducing necessary changes and additions to the prescribed curriculum of the university for upgrading its standards for the students.

| 2020-21   | 5        | 4  | 3  | 2  | 1  |   |
|---|----------|----|----|----|----|---|
| DATA IN PERCENTAGE  |          |    |    |    |    |   |
| <b>Academic content and its applicability of the curriculum</b> | <b>A</b> | 0  | 87 | 13 | 0  | 0 |
| <b>Coverage of advanced and latest topics</b>                   | <b>B</b> | 27 | 47 | 27 | 0  | 0 |
| <b>Sequence of units in the subjects</b>                        | <b>C</b> | 20 | 60 | 20 | 0  | 0 |
| <b>Number of chapters in terms of load on teachers</b>          | <b>D</b> | 13 | 60 | 27 | 0  | 0 |
| <b>Number of chapters in terms of load on students</b>          | <b>E</b> | 13 | 47 | 40 | 0  | 0 |
| <b>Practical orientation and relevance</b>                      | <b>F</b> | 20 | 40 | 40 | 0  | 0 |
| <b>Availability of learning materials and text books</b>        | <b>G</b> | 40 | 47 | 13 | 0  | 0 |
| <b>Regular communication about changes in syllabus</b>          | <b>H</b> | 27 | 53 | 7  | 13 | 0 |



## FACULTY FEEDBACK 2020-21




From the above analysis it is very much clear that the new syllabus includes all the aspects expected by the teaching fraternity in the institution and they are also comparatively happy to state that the opinion of the faculty for all the parameters is highly positive and none of the parameters is given below average and fair.

The respondents still feel that, some more improvements pertaining to the regularity in the communication regarding curriculum change from the university is required as they have responded comparatively less compared to other parameters as it includes 13% of them feel it is necessary to improvise the communication from the university to affiliated institutions for uninterrupted teaching and learning mechanism.

The teaching fraternities in the institution are of the opinion that there is a further improvement required with regard to:-

- Revision in the syllabus as per the current trend.
- Application based curriculum in degree courses.
- Involve all stakeholders while framing syllabus

  
**IQAC Coordinator**  
**MES Institute of Management**  
**Rajajinagar, Bangalore-560 010**

  
**Principal**  
**MES Institute of Management**

# MES INSTITUTE OF MANAGEMENT

VidyaVihar, 25/1,17<sup>th</sup> Main, II Block, Rajajinagar, Bangalore-560 010.

## ALUMNI FEEDBACK ON CURRICULUM- 2020-21

Feedback is an essential component of the institutional development. Therefore, MES Institute of management collects the feedback on various curriculum aspects from different stakeholders such as the students, alumni, Faculty, Employers and Parents either through online mode. The data collected from the stakeholders is analysed as per the recommendations given under “skill gap study conducted for Bangalore Urban District by NSDC”, which is then reviewed by Head of the Institution with IQAC coordinators. Based on the reviews from HOI and IQAC coordinators, required action has been taken in consideration for the development of curriculum.

MES Institute of Management has the practice of collecting feedback from Alumni, through online mode. It is also believed that alumni feedback is an important source of information for betterment and development of the institution. A well-designed feedback form on curriculum development and value-added courses is structured to collect the data. It is the tradition of the college to involve alumni in its activities.

| ALUMNI FEEDBACK 2020-21               |   |      |      |      |      |     |
|---------------------------------------|---|------|------|------|------|-----|
| COURSE APPROPRIATION                  | A | 29.9 | 27.1 | 29.4 | 11.3 | 2.3 |
| VALUE ADDED COURSE                    | B | 21.5 | 31.1 | 26.6 | 17.7 | 3.2 |
| SUBJECT KNOWLEDGE OF THE TEACHERS     | C | 39.0 | 29.4 | 20.3 | 9.6  | 1.7 |
| STRUCTURED SYSTEM IN THE COLLEGE      | D | 27.1 | 28.2 | 25.4 | 15.8 | 3.4 |
| EVALUATION MECHANISAION OFTHE COLLEGE | E | 26.0 | 29.9 | 26.6 | 15.3 | 2.3 |
| MENTORING SYSTEM IN THE COLLEGE       | F | 31.6 | 23.7 | 28.2 | 13.0 | 3.4 |
| LEARNING RESOURCES                    | G | 31.6 | 24.9 | 25.4 | 13.0 | 5.1 |
| SPORTS FACILITY IN THE COLLEGE        | H | 17.5 | 25.4 | 32.8 | 20.0 | 4.3 |
| EXTENSION ACTIVITIES- CC AND EC       | I | 31.1 | 29.4 | 20.9 | 13.0 | 5.6 |
| OVERALL RATING OF THE COLLEGE         | J | 29.9 | 31.1 | 24.9 | 7.3  | 6.8 |



# MES INSTITUTE OF MANAGEMENT

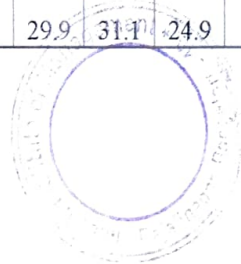
VidyaVihar, 25/1,17<sup>th</sup> Main, II Block, Rajajinagar, Bangalore-560 010.

## ALUMNI FEEDBACK ON CURRICULUM- 2020-21

Feedback is an essential component of the institutional development. Therefore, MES Institute of management collects the feedback on various curriculum aspects from different stakeholders such as the students, alumni, Faculty, Employers and Parents either through online mode. The data collected from the stakeholders is analysed as per the recommendations given under “skill gap study conducted for Bangalore Urban District by NSDC”, which is then reviewed by Head of the Institution with IQAC coordinators. Based on the reviews from HOI and IQAC coordinators, required action has been taken in consideration for the development of curriculum.

MES Institute of Management has the practice of collecting feedback from Alumni, through online mode. It is also believed that alumni feedback is an important source of information for betterment and development of the institution. A well-designed feedback form on curriculum development and value-added courses is structured to collect the data. It is the tradition of the college to involve alumni in its activities.

| ALUMNI FEEDBACK 2020-21               |   |      |      |      |      |     |
|---------------------------------------|---|------|------|------|------|-----|
| COURSE APPROPRIATION                  | A | 29.9 | 27.1 | 29.4 | 11.3 | 2.3 |
| VALUE ADDED COURSE                    | B | 21.5 | 31.1 | 26.6 | 17.7 | 3.2 |
| SUBJECT KNOWLEDGE OF THE TEACHERS     | C | 39.0 | 29.4 | 20.3 | 9.6  | 1.7 |
| STRUCTURED SYSTEM IN THE COLLEGE      | D | 27.1 | 28.2 | 25.4 | 15.8 | 3.4 |
| EVALUATION MECHANISAION OFTHE COLLEGE | E | 26.0 | 29.9 | 26.6 | 15.3 | 2.3 |
| MENTORING SYSTEM IN THE COLLEGE       | F | 31.6 | 23.7 | 28.2 | 13.0 | 3.4 |
| LEARNING RESOURCES                    | G | 31.6 | 24.9 | 25.4 | 13.0 | 5.1 |
| SPORTS FACILITY IN THE COLLEGE        | H | 17.5 | 25.4 | 32.8 | 20.0 | 4.3 |
| EXTENSION ACTIVITIES- CC AND EC       | I | 31.1 | 29.4 | 20.9 | 13.0 | 5.6 |
| OVERALL RATING OF THE COLLEGE         | J | 29.9 | 31.1 | 24.9 | 7.3  | 6.8 |





## ALUMNI FEEDBACK ANALYSIS 2020-21



From the data provided it is very much clear that, in the year 2020-21 alumni are very contented to provide for most of the parameter's positive response with a wonderful percentage, which ranges between 95%- 100%.

The course appropriation, subject knowledge of the faculty, structured system in the college, mentoring system followed, availability of the learning resources and extension activities adopted and followed in the institution, are some of the important positive indicators. Some of the parameters like sports facility, extension activities, improvement in learning resources is expected slight improvement by alumni. These small improvements are required to be attended for the future perspective of the college.

*J. L. M. S.*  
**IQAC Coordinator**  
**MES Institute of Management**  
**Rajajinagar, Bangalore-560 010**

*Sharda S*  
**Principal**  
**MES Institute of Management**  
**Rajajinagar, Bangalore-560 010**