

# MES INSTITUTE OF MANAGEMENT

Vidya Vihar, 25/1, 17<sup>th</sup> Main, II Block, Rajajinagar, Bangalore-560 010

## STUDENTS FEEDBACK ON CURRICULUM FOR THE ACADEMIC YEAR 2021-22

The students are the most important stakeholders of Higher Education system. To understand the requirements of the students and to provide a well-designed systematic academic knowledge focusing higher education and corporate requirements, the institution has collected feedback from students. A special five-point rating scale was adopted to get the opinion of the students on curriculum. The maximum score is 5 indicates-Excellent, 4 indicates-Very Good, 3 indicates-Good, 2 indicates-Average and 1 indicates - Poor. The institution has received total of 86% (556 out of 640) student's online feedback on the curriculum prescribed by the university and feedback on the value-added courses. The table given below are the questions that given in the questionnaire and the symbols are used to depict the same parameter for analysis in the table and graph.

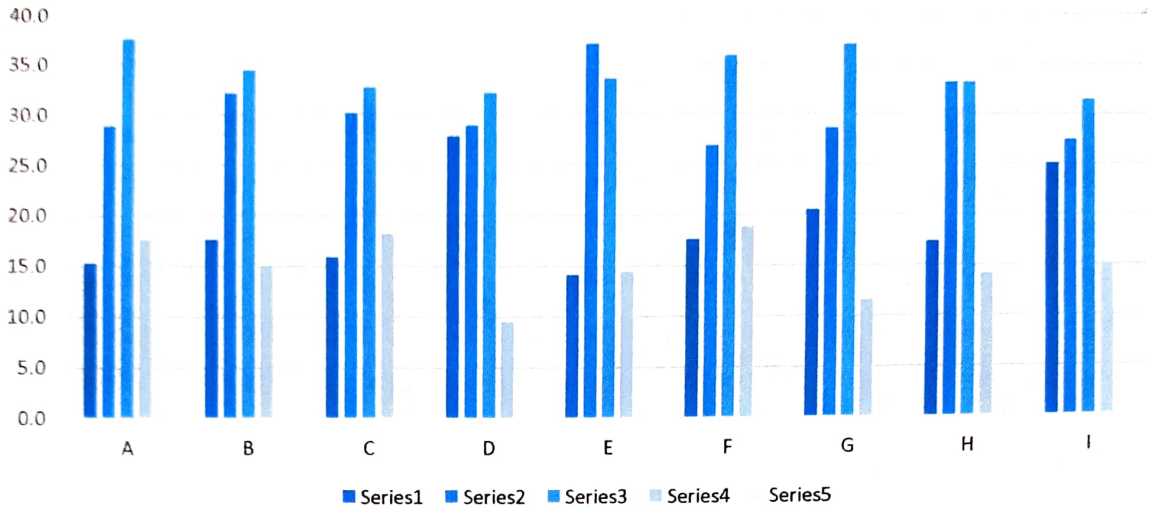
**TABLE SHOWING THE PERCENTAGE OF RESPONSES OF THE STUDENTS FOR THE  
ACADEMIC YEAR 2021-22**

2021-22		5	4	3	2	1
<b>Value Added Programs</b>	<b>A</b>	15.3	28.9	37.6	17.6	0.6
<b>Expected outcome of the course</b>	<b>B</b>	17.6	32.1	34.4	15.0	0.9
<b>Choice-based credit system</b>	<b>C</b>	15.9	30.1	32.7	18.2	3.2
<b>Overall rating of the program and various facilities in the college</b>	<b>D</b>	27.7	28.9	32.1	9.5	1.7
<b>Syllabus of each course covers recent trends and developments</b>	<b>E</b>	14.2	37.0	33.5	14.5	0.9
<b>Course Content has enough scope for analytical development</b>	<b>F</b>	17.6	26.9	35.8	18.8	0.9
<b>Objectivity of assessment and evaluation</b>	<b>G</b>	20.5	28.6	37.0	11.6	2.3
<b>Developing habit of self-learning and skill development</b>	<b>H</b>	17.3	33.2	33.2	14.2	2.0
<b>Teaching methodologies adopted by faculties</b>	<b>I</b>	25.1	27.5	31.5	15.0	0.9



**GRAPH SHOWING THE PERCENTAGE OF RESPONSES OF THE STUDENTS FOR THE  
ACADEMIC YEAR 2021-22**

**STUDENTS FEEDBACK 2021-22**



From the above Table and Graph enclosed, it is evident, that the students have given more than 95%, their response positively, for all the questions, especially on the questions regarding curriculum adopted by the institution, prescribed by the university, overall rating of the institution, syllabus coverage by faculty members, Value Added Programs, expected outcome of the course.

It is also observed that Syllabus of each course covers recent trends and developments, Teaching methodologies adopted by faculties and Developing habit of self-learning and skill development

It is really pleasing to see that none of the parameters have been given below 95% rating by the students and it's a sign of positive improvement of the strategies adopted by the institution focusing the development of the students.

But it is as well identified a very small percentage of the students have shown negativity in the feedback for all the questions less than 4 % which will be taken care of by the institution for future improvements.



# MES INSTITUTE OF MANAGEMENT

Vidya Vihar, 25/1, 17<sup>th</sup> Main, II Block, Rajajinagar, Bangalore-560 010.

## FACULTY FEEDBACK REPORT ON CURRICULUM- 2021-22

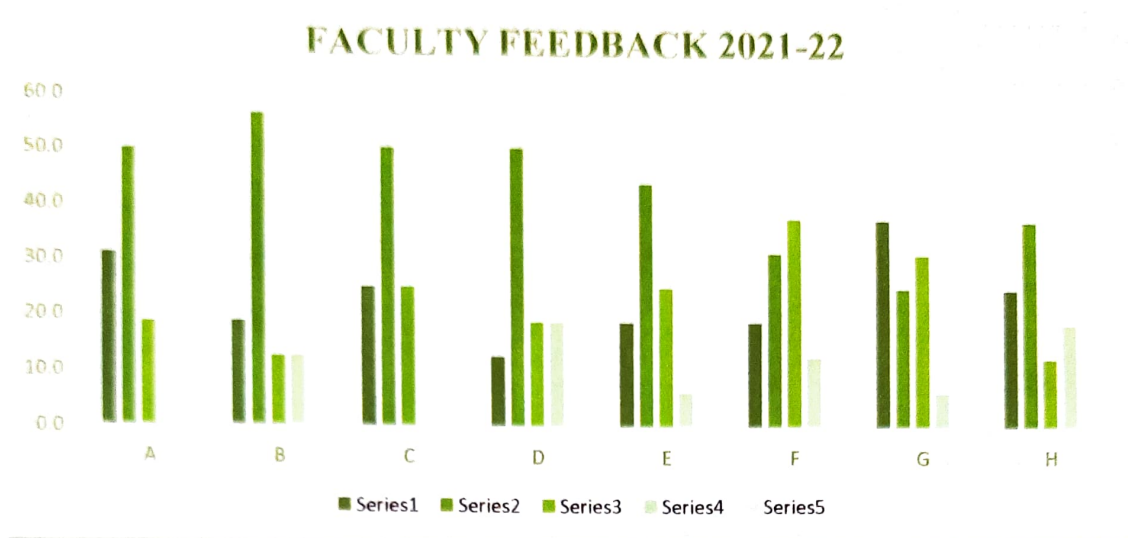
MES Institute of Management is affiliated to the Bengaluru City University and follows the prescribed curriculum of the affiliated university. It always emphasizes to make curriculum more effective to students, timely bridging the gap between academic and industry requirements as well as considering the students future requirements, it always try to improvise the curriculum as per requirements. As important stake holder of the institution and considering the intellectual knowledge of the highly qualified and experienced faculty members, the institution collects feedback from all the faculty members regarding suggestions on improvement of the syllabus. These feedback on the curriculum and analyzed and the same is reviewed by Head of the Institution and IQAC coordinator for introducing necessary add-on courses to the prescribed curriculum of the university for upgrading its standards for the students.

**TABLE SHOWING THE PERCENTAGE OF RESPONSES OF THE FACULTIES FOR THE ACADEMIC YEAR 2021-22**

2021-22		5	4	3	2	1
<b>Academic content and its applicability of the curriculum</b>	A	31.3	50.0	18.8	0.0	0.0
<b>Coverage of advanced and latest topics</b>	B	18.8	56.3	12.5	12.5	0.0
<b>Sequence of units in the subjects</b>	C	25.0	50.0	25.0	0.0	0.0
<b>Number of chapters in terms of load on teachers</b>	D	12.5	50.0	18.8	18.8	0.0
<b>Number of chapters in terms of load on students</b>	E	18.8	43.8	25.0	6.3	0.0
<b>Practical orientation and relevance</b>	F	18.8	31.3	37.5	12.5	0.0
<b>Availability of learning materials and text books</b>	G	37.5	25.0	31.3	6.3	0.0
<b>Regular communication about changes in syllabus</b>	H	25.0	37.5	12.5	18.8	0.0



**GRAPH SHOWING THE PERCENTAGE OF RESPONSES OF THE FACULTIES FOR THE ACADEMIC YEAR 2021-22**



From the above analysis it is clear that the new syllabus introduced as per New Education Policy, includes all the aspects expected by the teaching fraternity in the institution and they are also fairly pleased to provide highly positive opinion for all the parameters and none of the parameters is given below average.

It is also observed that for some of the parameters a small percentage of average ratings are given due to delay in clarification of curriculum occurred during the initial implementation of the NEP system.

The teaching fraternity still feel that, some more improvements pertaining to Coverage of advanced and latest topics, load on teachers, Number of chapters in terms of load on students, Practical orientation and relevance and the regularity in the communication regarding curriculum change from the university and the respondents as well feel it is necessary to improve the communication from the university to affiliated institutions for uninterrupted teaching and learning mechanism.

The teaching fraternity in the institution are of the opinion that there is a further improvement required with regard to NEP implementation: -

- NEP2020 is a good change and good initiative in the education system, but it should be implemented properly by universities for a complete effective academic quality
- Some of the respondents feel that NEP could have added more relevant subjects related to the discipline to lay strong foundation among students
- Some of them feel it is better system than previous system as it helps in over-all development of students
- It as well helps in transformation of the Indian education system, bringing a holistic change in the education system



# MES INSTITUTE OF MANAGEMENT

VidyaVihar, 25/1,17<sup>th</sup> Main, II Block, Rajajinagar, Bangalore-560 010.

## ALUMNIFEEEDBACK ON CURRICULUM- 2021-22

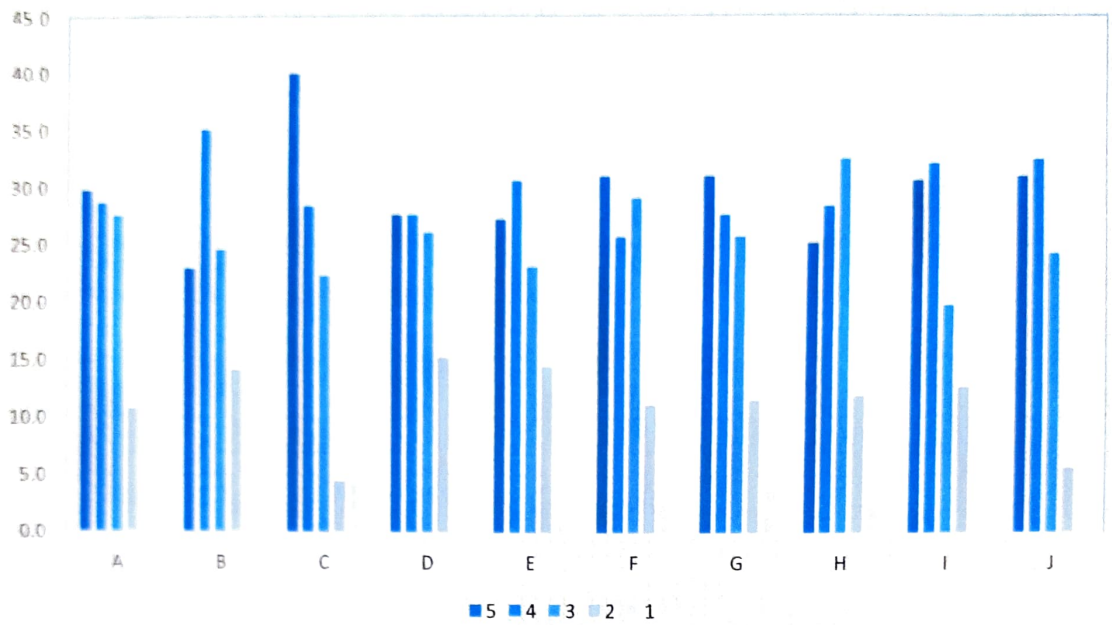
Feedback is an essential component of the institutional development. Therefore, MES Institute of Management collects the feedback on various curriculum aspects from different stakeholders such as the Students, Alumni, Faculty, Employers and Parents either through online mode. The data collected from the stakeholders is analyzed as per the recommendations given under “skill gap study conducted for Bangalore Urban District by NSDC”, which is then reviewed by Head of the Institution with IQAC coordinators. Based on the reviews from HOI and IQAC coordinators, required action has been taken in consideration for the development of curriculum.

MES Institute of Management has the practice of collecting feedback from Alumni, through online mode. It is also believed that alumni feedback is an important source of information for betterment and development of the institution. A well-designed feedback form on curriculum development and value-added courses is structured to collect the data. It is the tradition of the college to involve alumni in its activities.

ALUMNI FEEDBACK 2021-22						
COURSE APPROPRIATION	A	29.9	28.7	27.6	10.8	2.2
VALUE ADDED COURSE	B	23.0	35.1	24.6	14.2	2.1
SUBJECT KNOWLEDGE OF THE TEACHERS	C	39.9	28.4	22.4	4.5	4.9
STRUCTURED SYSTEM IN THE COLLEGE	D	27.6	27.6	26.1	15.3	3.4
EVALUATION MECHANISAION OF THE COLLEGE	E	27.2	30.6	23.1	14.6	4.5
MENTORING SYSTEM IN THE COLLEGE	F	31.0	25.7	29.1	11.2	3.0
LEARNING RESOURCES	G	31.0	27.6	25.7	11.6	4.1
SPORTS FACILITY IN THE COLLEGE	H	25.2	28.4	32.5	11.9	2.1
EXTENSION ACTIVITIES- CC AND EC	I	30.6	32.1	19.8	12.7	4.9
OVERALL RATING OF THE COLLEGE	J	31.0	32.5	24.3	5.6	6.7



## ALUMNI FEEDBACK 2021-22



From the data provided it is very much clear that, in the year 2021-22 alumni are very contented to provide for most of the parameter's positive response with a wonderful percentage, which ranges between 95%-98%.

The subject knowledge of the faculty, mentoring system followed, availability of the learning resources and extension activities adopted and followed in the institution, are some of the important positive indicators. Which is followed by some of the parameters like sports facility, extension activities. Improvements in learning resources is expected slight improvement by alumni. These small improvements are required to be attended for the future perspective of the college.



# MES INSTITUTE OF MANAGEMENT

Vidya Vihar, 25/1, 17<sup>th</sup> Main, II Block, Rajajinagar, Bangalore-560 010.



## ACTION TAKEN REPORT FOR THE YEAR 2021-22

Feedback from all the stakeholders- Faculty, Students, Alumni, are taken every year by HOI in coordination with IQAC which can be filled online regarding various aspects including curriculum. The analysis is reported and suitable timely actions are taken for the overall development of the institution and students. The summary of the action taken report for the academic year 2021-22 is as follows.

### FEEDBACK FROM FACULTY

QUESTIONS RATED BELOW AVERAGE (SUGGESTIONS)	ACTION TAKEN
Coverage of advanced and latest topics	Institution is providing various value-added programs which helps the students to learn more about advanced topics if it is not included in the syllabus
Practical orientation and relevance	More over NEP has brought various changes in the curriculum by introducing new curriculum which has included new courses and advanced topics like digital fluency, artificial intelligence and may more
Number of chapters in terms of load on teachers	Institution follows planned seamless time table to provide ample time for the faculty members to complete syllabus with elaborate explanation and required activity for every course, which helps both
Number of chapters in terms of load on students	faculty and students to comfort the process of teaching and learning
Regular communication about changes in syllabus	Institution consistently contacts the affiliated university for any changes in the syllabus in order to maintain smooth continuous function of the teaching process.  The syllabus is also available in the university website which is circulated among students' time to time



## FEEDBACK FROM STUDENTS

### QUESTIONS RATED BELOW AVERAGE (SUGGENSTIONS)

### ACTION TAKEN

Value added programs

To match the current trend in the corporate sector, institution providing appropriate value-added courses to all the students to upgrade their knowledge equivalent to corporate level

Course Content has enough scope for analytical development

From 2021-22, NEP is introduced with wide choice given to students to select courses under open electives which provides them higher scope for understanding the other disciplines for their future endeavors.

Expected outcome of the Course

Choice based credit system

The institution has already selected different courses for the students which has sufficient scope for analytical development

NEP has more scope for experiential learning for the students under the syllabus prescribed in the form of internships and research scope which helps in self-learning among students

Developing habit of self-learning and skill development

Apart from this the current CBCS curriculum prescribed also gives more scope for self-learning in the form of community services, field survey, internships in each semester which also focus for skill development. Institution has included these skill-based curriculums and consistently motivating as well as helping students to take up such activities and courses.





## FEEDBACK FROM ALUMNI

QUESTIONS RATED BELOW AVERAGE (SUGGENSTIONS)	ACTION TAKEN
Extension Activities- Co-curricular And Extra curricular	MES Institute of Management has taken initiative to increase the cocurricular and extra-curricular activities for students in 2021-22, which includes industrial visit to various companies and other student centric activities for the overall development of the students.
Evaluation Mechanism of the College	As part of CIE institution conducts two internal tests to students systematically, which is evaluated and performance of each student is discussed separately and the same is communicated to their parents in the parent teachers' meetings time to time in every semester
Mentoring System in The College	Faculty members are assigned with group of students by HOI who are continuously monitored by the mentors whose performance is observed and steps are taken to improve their performances consistently
Subject Knowledge of The Teachers	All the faculty members are highly qualified and experienced in their respective disciplines and institution as well provides opportunities and supports faculties to update their knowledge time to time
Learning Resources	Institution has taken keen initiative to improve learning resources by installing projectors, lap top facility for ICT enabled teaching, increase in the number of book subscription facility in the library. The Institution has provided e-resource facility for the students
Sports Facility in The College	Sports facility is improved and sports activity is encouraged in the form of annual sports meet, inter-collegiate sports events etc.,

*H. M. S.*  
**IQAC Coordinator**  
**MES Institute of Management**  
**Rajajinagar, Bangalore-560 010**

*sharada S*  
**Principal**  
**MES Institute of Management,**  
**Rajajinagar, Bangalore-560 010**