

MES INSTITUTE OF MANAGEMENT

Vidya Vihar, 25/1, 17th Main, II Block, Rajajinagar, Bangalore-560 010

STUDENTS FEEDBACK ON CURRICULUM FOR THE ACADEMIC YEAR 2019-20

The students are the most important stakeholders of Higher Education system. To understand the requirements of the students and to provide a well-designed systematic academic knowledge, focusing higher education and corporate requirements. The institution has collected feedback from students. A special five-point rating scale was adopted to get the opinion of the students on curriculum. The maximum score is 5 indicates-Excellent, 4 indicates-Very Good, 3 indicates-Good, 2 indicates-Average and 1 indicates -Poor. The college has received total of 540 (675) student's feedback on the curriculum prescribed by the university and feedback on the value-added courses. The questionnaire is stated below as parameters and symbols are assigned to each questions and data collected is presented in tabular and graphical forms depicting the relevant question.

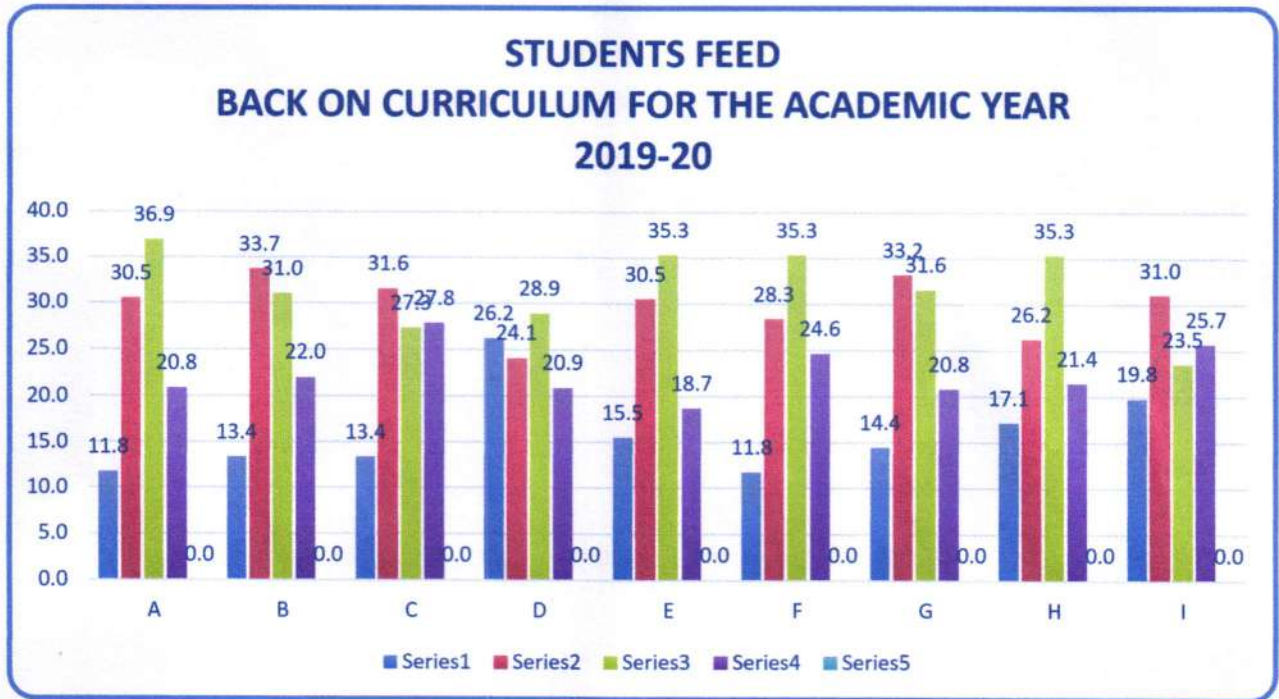
PARAMETERS	SYMBOL
Rate the syllabus of the course that you have gone through in relation to the expected outcome of the course	A
Syllabus of each course covers recent trends and developments	B
Value Added Programs and Course activities (Field Visit/ Project Work/ Assignments/ Seminars/ Others) are relevant to the development of various skills necessary for Career advancement, Employment and Self Employment.	C
Teaching methods followed by teachers.	D
The objectivity of assessment and evaluation.	E
The curriculum contains a wide range of courses under choice-based credit system	F
The curriculum has the potential in developing the habit of self-learning and skill development.	G
Course Content has enough scope for analytical development	H
Overall rating of the program and various facilities in the college	I

TABLE SHOWING THE PERCENTAGE OF RESPONSES OF THE STUDENTS FOR THE ACADEMIC YEAR 2019-20

2019-20	DATA DEPICTED IN PERCENTAGES				
	5	4	3	2	1
A	11.8	30.5	36.9	20.8	0.0
B	13.4	33.7	31.0	22.0	0.0
C	13.4	31.6	27.3	27.8	0.0
D	26.2	24.1	28.9	20.9	0.0
E	15.5	30.5	35.3	18.7	0.0
F	11.8	28.3	35.3	24.6	0.0
G	14.4	33.2	31.6	20.8	0.0
H	17.1	26.2	35.3	21.4	0.0
I	19.8	31.0	23.5	25.7	0.0



GRAPH SHOWING THE PERCENTAGE OF RESPONSES OF THE STUDENTS FOR THE ACADEMIC YEAR 2019-20



From the above Table and Graph enclosed, it is apparent, that the students have given more than 70 to 80% to of their response positively, i.e., majority of the students' responses are between excellent, very Good and Good, for the questions asked for finding out their views on the curriculum adopted by the institution, prescribed by the university. Some of the important highlights of the response of the students is regarding

Practical approach of the curriculum, skill development focus of the value-added course and curriculum focusing for the analytical development.

It is really pleasing to see that none of the parameters have been given below average rating by the students and it's a sign of positive improvement of the strategies adopted by the institution focusing the academic development of the students.

Harim MS
IQAC Coordinator
MES Institute of Management
Rajajinagar, Bangalore-560 010

Sharmada
Principal
MES Institute of Management
Rajajinagar, Bangalore-560 010

MES INSTITUTE OF MANAGEMENT

Vidya Vihar, 25/1,17th Main, II Block, Rajajinagar, Bangalore-560 010.

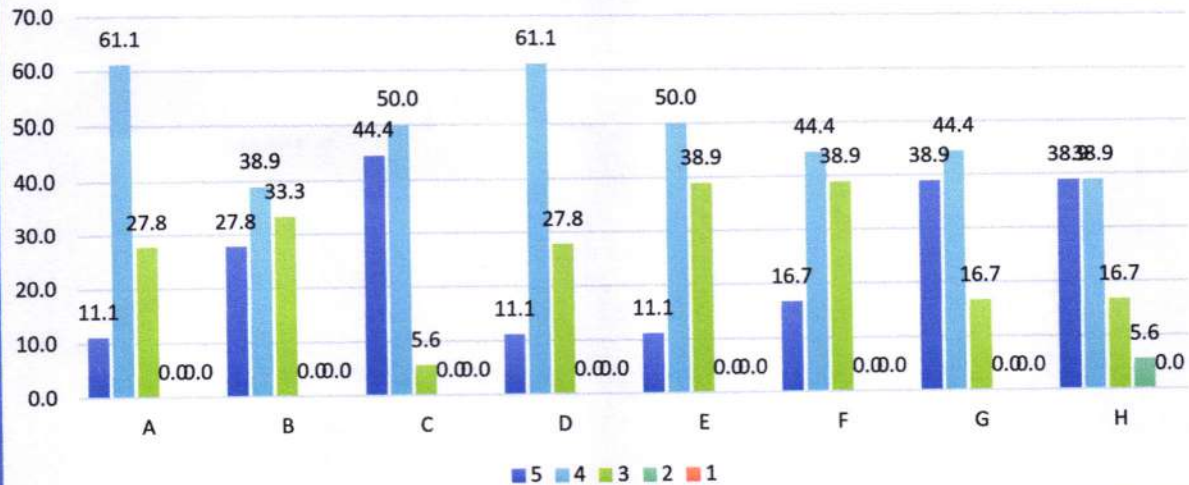
FACULTY FEEDBACK REPORT ON CURRICULUM- 2019-20

MES Institute of Management is affiliated to the Bangalore University and follows the prescribed curriculum of the university. It emphasises to make curriculum meet the present trends and industry requirements. As important stake holder of the institution, considering the intellectual knowledge of the highly qualified and experienced faculty, the institution collects feedback from all the faculty on the syllabus. These feedbacks are reviewed by HOI and IQAC to identify the gaps and take necessary measures on improvisation.

2019-20		5	4	3	2	1
Academic content and its applicability of the curriculum	A	11.1	61.1	27.8	0.0	0.0
Coverage of advanced and latest topics	B	27.8	38.9	33.3	0.0	0.0
Sequence of units in the subjects	C	44.4	50.0	5.6	0.0	0.0
Number of chapters in terms of load on teachers	D	11.1	61.1	27.8	0.0	0.0
Number of chapters in terms of load on students	E	11.1	50.0	38.9	0.0	0.0
Practical orientation and relevance	F	16.7	44.4	38.9	0.0	0.0
Availability of learning materials and text books	G	38.9	44.4	16.7	0.0	0.0
Regular communication about changes in syllabus	H	38.9	38.9	16.7	5.6	0.0



FACULTY FEEDBACK ON CURRICULUM FOR THE ACADEMIC YEAR 2019-20



From the above analysis it is very much clear that the new syllabus includes all the aspects to meet the current trends and the industrial requirements. It is also indicated that there is a considerable change in the curriculum prescribed by the university.

5.6% of the respondents still feel that regularity in the communication regarding curriculum change from the university is required.

Harini M.S
IQAC Coordinator
MES Institute of Management
Rajajinagar, Bangalore-560 010

Sharanadas
Principal
MES Institute of Management
Rajajinagar, Bangalore-560 010

MES INSTITUTE OF MANAGEMENT

VidyaVihar, 25/1,17th Main, II Block, Rajajinagar, Bangalore-560 010.

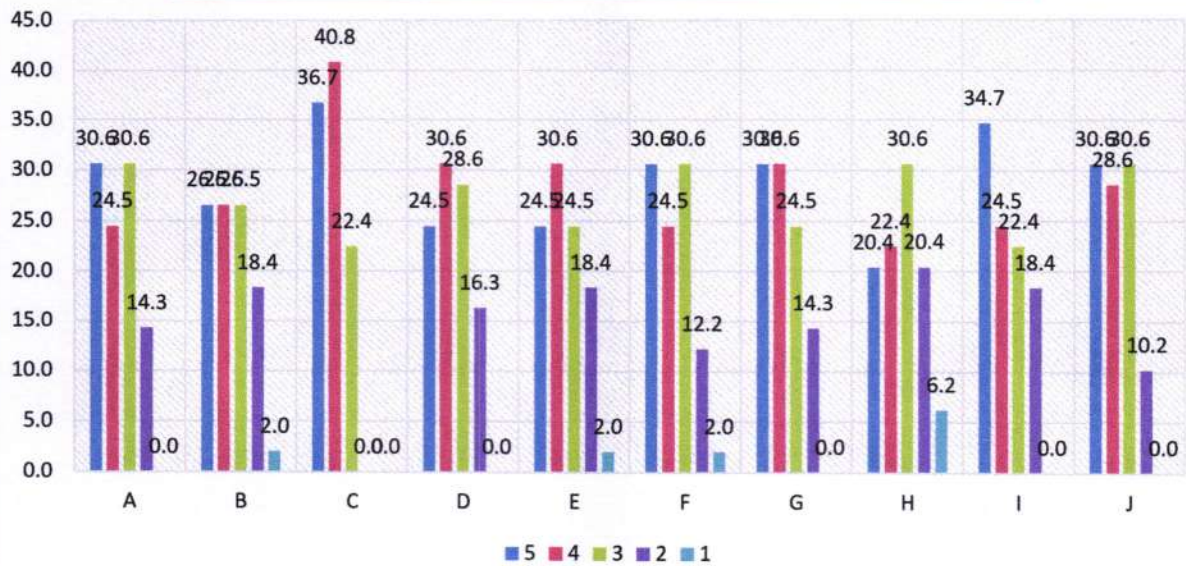
ALUMNI FEEDBACK ON CURRICULUM- 2019-20

MES Institute of Management has the practice of collecting feedback from Alumni. It is also believed that alumni feedback is an important source of information for betterment and development of the institution. A well-designed feedback form on curriculum development and value-added courses is structured to collect the data. It is the tradition of the college to involve alumni in its activities. The data collected from the stakeholders is analysed which is then reviewed by HOI and IQAC. Based on the reviews from HOI and IQAC, required action has been taken for enhancing the quality of curriculum

2019-20		5	4	3	2	1
Course Appropriation	A	30.6	24.5	30.6	14.3	0.0
Value Added Course	B	26.5	26.5	26.5	18.4	2.0
Subject Knowledge of the Teachers	C	36.7	40.8	22.4	0.0	0.0
Structured System in The College	D	24.5	30.6	28.6	16.3	0.0
Evaluation Mechanisation of the College	E	24.5	30.6	24.5	18.4	2.0
Mentoring system in The College	F	30.6	24.5	30.6	12.2	2.0
Learning Resources	G	30.6	30.6	24.5	14.3	0.0
Sports Facility in The College	H	20.4	22.4	30.6	20.4	6.2
Extension Activities- Cocurricular & Extracurricular	I	34.7	24.5	22.4	18.4	0.0
Overall Rating of The College	J	30.6	28.6	30.6	10.2	0.0



ALUMNI FEEDBACK ON CURRICULUM OF 2019-20



From the data provided it is very much clear that, in the year 2019-20 alumni are very contended to provide for most of the parameter's positive response with a wonderful percentage, which ranges between 85%-100%.

The course appropriation, subject knowledge of the faculty, structured system in the college, mentoring system followed, availability of the learning resources and extension activities adopted and followed in the institution, are some of the important positive indicators. Other parameters are also responded positively but it shows some requirements for the improvement like sports facility, value-added course, and mentoring system, which are responded comparatively average with a small percentage of 8% and 2% respectively.

Harim M.S
IQAC Coordinator
MES Institute of Management
Rajajinagar, Bangalore-560 010

Sharada S
Principal
MES Institute of Management
Rajajinagar, Bangalore

MES INSTITUTE OF MANAGEMENT

VidyaVihar, 25/1,17th Main, II Block, Rajajinagar, Bangalore-560 010.

ACTION TAKEN REPORT FOR THE YEAR 2019-20

Feedback from all the stakeholders- Faculty, Students, Alumni, are taken every year by HOI in coordination with IQAC. The feedback is analysed and suitable timely actions are taken for the overall development of the institution and students. The summary of the action taken report for the academic year 2019-20 is as follows.

FEEDBACK FROM FACULTY	
QUESTIONS RATED BELOW AVERAGE (SUGGESTIONS)	ACTION TAKEN
Regular communication about changes in syllabus	Institution has been continuously tracking the activities and notifications from the university to adopt the changes in syllabus in order maintain the smooth functionality in the academics

FEEDBACK FROM STUDENTS	
QUESTIONS RATED BELOW AVERAGE (SUGGESTIONS)	ACTION TAKEN
Syllabus of each course covers recent trends and developments	Subject wise seminars and guest lectures are initiated to update the curriculum with advanced topics
The syllabus of the course has the expected outcome of the course	Planned and structured add-on courses are introduced on the basis of the requirement of the academic programme, to meet the gap between academic and corporate prerequisite. The college introduced 360 degree financial Modelling, Python, Equity analyst program.
Value Added Programs and Course activities	
Syllabus are relevant to the development of various skills necessary for Career advancement, Employment and Self Employment	Skill development activities, courses are initiated, placement cell activities are also initiated to provide students opportunities to attend interview for placement support
The curriculum has the potential in developing the habit of self-learning and skill development	



FEEDBACK FROM ALUMNI

QUESTIONS RATED BELOW AVERAGE (SUGGENSTIONS)	ACTION TAKEN
Value Added Course	Relevant value-added courses are initiated to improve the course outcome and for career development. The college introduced 360 degree financial Modelling, Python, Equity analyst program.
Sports Facility in The College	The college has an MOU with BBMP authorities for using their sports ground facility for conducting track and field events and outdoor games like cricket, volleyball, throw ball and other games. The college has adequate facility for conducting indoor games like, badminton, table tennis, chess, carrom etc.,

NOTE: “VAK SURABHI”- the flow of thoughts is introduced where in the think tank of the society are invited to address the students on current affairs, values and ethics, climate change and other relevant topics

Hoorina M.S.
IQAC Coordinator
MES Institute of Management
Rajajinagar, Bangalore-560 010

Shanade S
Principal
MES Institute of Management
Rajajinagar, Bangalore-560 010